

Key Features



Purity Through 6 Stage Purification

6S TECHNOLOGY: Sediment-filter + SCB filter™ (Sediment filter + Carbon block) + Patented Side Stream RO Membrane + SCM-TECH™ filter (MIN-TECH* + Silver Activated Post Carbon). In A. O. Smith X3/X3+ RO Water Purifier 100% of the water passes through the RO Membrane.



Advanced Patented SSM Technology (Side Stream Membrane)

Suitable for water with low and high (upto 2000 ppm) TDS. Wastes less water and improves pure water recovery.



MIN-TECH* (*Mineraliser Technology)

The MIN-TECH* (*Mineraliser Technology) adds essential minerals to the water. This ensures that the water tastes fresh and natural and has balanced pH – an essential requirement for drinking water.



Digital Display

Digital display for simple and intelligent display of information. (only for X3+ model)



CONVENIENCE

Provision for wall mounting only.



ADVANCE ALERT TECHNOLOGY

For RO membrane and Pre + Post RO filters change.



WARRANTY

For X3, 1 year warranty on all electrical parts & functional parts and 6 months warranty on RO membrane and all other filters. For X3+, 1 year warranty on all electrical parts & functional parts as well as on RO membrane and 6 months warranty all other filters.



WQA Certified RO Membrane

RO membrane element in A. O. Smith X3/X3+ RO Water Purifier is tested and certified by WQA against NSF/ANSI 58 standards for material requirements.

1

Pre-instruction Literature

On Receipt

It is our policy to promote safe delivery of all orders. This product shipment has been thoroughly checked, packed and quality certified before leaving our factory.

Visible Loss or Damage

If any of the goods called for on the bill of lading or express receipt are damaged or the quantity is short, do not accept them until the freight or express delivery agent makes an appropriate notation on your freight bill or receipt.

Concealed Loss or Damage

When a shipment has been delivered to you in apparent good condition, but upon opening the packaging if any loss or damage has taken place while in transit, inform the carrier's agent/A. O. Smith representative immediately.

About this user manual

This manual is a guide to good practice for operating and periodic maintenance of the A. O. Smith X3/X3+ RO Water Purifier.

This does not contain the full servicing procedures necessary for continued successful operation of this product. The services of A. O. Smith Company Authorised Service Technician must be employed periodically on the same. Do not operate before reading manual supplied with this product.

Please follow instructions in this manual to ensure personal safety and proper operation of this product. A. O. Smith assumes no liability for installation or servicing performed by any unauthorised personnel. Always install, operate, inspect and maintain this product in accordance with all applicable standards. Please store this user manual carefully for any future reference.

2

OVER A CENTURY OF INNOVATION

A. O. Smith enjoys a rich history of achievements. A glimpse at our 144-years history reveals numerous engineering and technical achievements.

CHANGING THE LOOK AND THE OUTLOOK OF THE WATER HEATER INDUSTRY

A. O. Smith has established itself as a company that can make a difference. It has brought international quality standards to India's water heater industry. The company came to India in 2008, with a revolutionary range of water heaters. It has raised customer expectations, and shown the industry how to meet them. The company now enters the water purifier industry, an industry poised and ready for change. You can look forward to a lot of excitement ahead.

World's No. 1 Manufacturer of Water Heaters



Manufactured by A. O. Smith India Water Products Private Limited

Plot 300, Phase - II, KIADB Industrial Area, Harohalli, Kanakapura Taluk, Ramanagara District, Karnataka – 562 112, India.

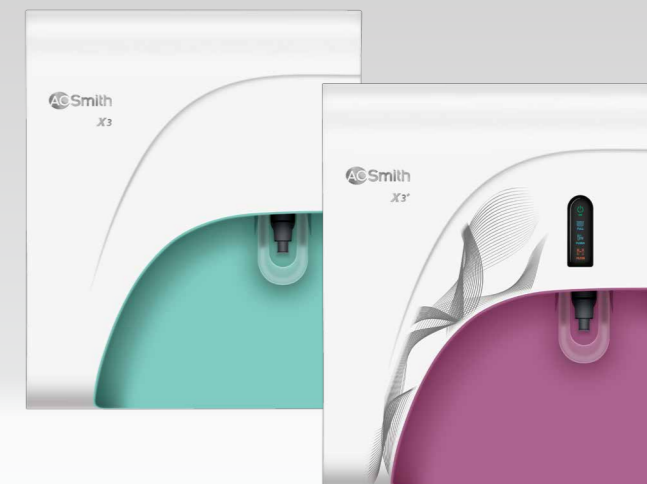
Customer Care No. 1800-103-2468/1860-500-2468 • Website: www.aosmithindia.com

CIN: U31909KA2006PTC040282

Actual product may differ from the image shown.
Part No.335300-004_A Date: 30-04-2018



Water Purifiers
X3 and X3+



EXPERT SERVICE

1800-103-2468/1860-500-2468
+91 99410 32468 (Whats App) or
aosmithcs@aosmithindia.com

Monday to Friday: 9 a.m. to 8 p.m.
Saturday & Sunday: 9 a.m. to 6 p.m.

For calls registered at A. O. Smith call centre before 4 p.m. only. Available only in selected cities. For more details, please call our Customer Care Centre or log on to www.aosmithindia.com

User Manual

General Instructions

Safety

Your safety and the safety of your loved ones is paramount to us. There are several safety related messages in this manual, which have been provided during various stages such as installation, operation and maintenance of your A. O. Smith X3/X3+ Water Purifier. These messages point out potential hazards and also educate on how to reduce any potential risks. Please always read and follow all safety messages as provided in this manual.

	This is the safety alert symbol. This symbol alerts you to potential hazards that can hurt you and others. All safety messages will follow the safety alert symbol and either the word "DANGER" or "WARNING".
	Indicates an imminently hazardous situation which, if not avoided, will result in death or serious injury.
	Indicates a potentially hazardous situation which, if not avoided, could result in death or serious injury.
	Indicates a potentially hazardous situation which, if not avoided, may result in minor or moderate injury or property damage.

IMPORTANT

These instructions have been written as a guide for the proper installation and operation of your A. O. Smith X3/X3+ Water Purifier. A. O. Smith will not accept any liability where these instructions have not been followed. However, for your safety and to avoid damage caused by improper installation, it is recommended that Water Purifier must be installed by A. O. Smith Company authorised service technician only.

Before proceeding with the installation instructions:

- Inspect the A. O. Smith X3/X3+ Water Purifier and its component parts for possible damage. DO NOT install or attempt to repair any damaged component parts. If you detect any damage in your A. O. Smith X3/X3+ Water Purifier please contact the company through Customer care centre, details of which are mentioned in this manual and on the product.
- Verify that the voltage being supplied corresponds to that which is mentioned in the A. O. Smith X3/X3+ Water Purifier manual.

3

Introduction

A. O. Smith X3/X3+ Water Purifier uses one of the latest technologies that is used in water purification process. A. O. Smith X3/X3+ Water Purifier works under the principle of RO (Reverse Osmosis) technology which is found to be one of the most effective process. In this process water under pressure is passed through a semipermeable membrane. Purified water is collected for drinking in a storage tank and impurities in the water are flushed to the drain

Why Water Purification is important?

Water purification, today is essential due to the presence of harmful contaminants present in the water supply. Rapid urbanisation and speedy industrial growth have led to significant pollutants and contaminants being found in the water supply. Below is a list of some of the harmful contaminants found today in the water supply which if consumed in excess can be detrimental to human health.

- TDS (Total Dissolved Solids) like Nitrates, Chlorides, Sulphates etc.
- Pesticides and VOC (Volatile Organic Compounds).
- Heavy metals like Mercury, Arsenic, Lead, Chromium, Cadmium etc., imbalanced pH.
- Microorganisms such as pathogenic bacteria, virus, protozoa and cysts.

A. O. Smith X3/X3+ Water Purifier removes excessive TDS (Total Dissolved Solids) in water by more than 95%. A. O. Smith X3/X3+ Water Purifier reduces heavy metals, removes pathogens and balances the pH value. By this, it ensures you safe and great tasting water.

How does A. O. Smith X3/X3+ Water Purifier work?

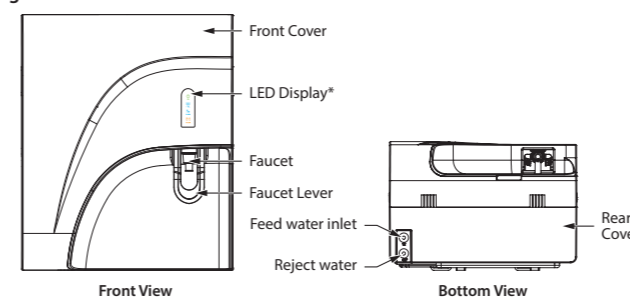
A. O. Smith X3/X3+ RO Water Purifier has 6 stages of purification system, wherein the water is passed through the various stages and progressively filtered to get purified water which is stored in the inbuilt storage tank.

- Stage 1 – Sediment filter**
The Sediment filter is used to remove physical contaminants such as dirt, dust, soil particles, turbidity present in the water. This improves the life of the SCB filter.
- Stage 2 and Stage 3 – SCB filter (Sediment and Carbon Block)**
This is a dual filter (Sediment and Carbon Block) where Sediment filter removes fine physical contaminants present in the water. Then water is passed through Carbon Block, which reduces harmful chemicals like pesticides, volatile organic compounds, residual chlorine etc. It also adsorbs bad taste and odour causing organic compounds from water.
- Stage 4 – RO (Reverse Osmosis) membrane**
RO membrane contains semi-permeable membrane wherein the water is passed through the semi-permeable membrane to remove TDS (Total Dissolved Solids) and heavy metals like mercury, arsenic, lead, chromium, cadmium etc. It also removes microorganisms like bacteria, virus, protozoa and cysts.

4

- Stage 5 and Stage 6 – SCM-TECH™ (Silver Activated Post Carbon and MIN-TECH*)**
This filter is the combination of Silver Activated Post Carbon and MIN-TECH* (*Mineraliser Technology). Silver Activated Post Carbon acts as polisher and enhances the taste of water. MIN-TECH* contains Calcium and Magnesium minerals which helps to improve the taste and quality of water. It also adds the required essential minerals back to water and balances the pH of water.

Figure 1

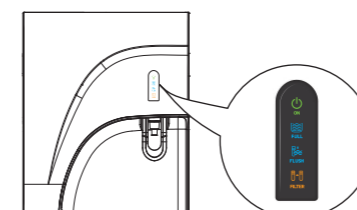


* Applicable only for X3+ model.

Note: The Ball Valve comes along with the product as standard accessories.

Function of indicators (For X3+ model only)

Figure 2



5

Power ON indicator

This indicates, that the system is switch ON/OFF condition.

- When the Power ON indicator is blinking, check feed water supply to the purifier.

Tank full indicator

This indicates that the Water Purifier tank is full.

- When there is an overflow the indicator starts to blink till it is fixed.

NOTICE

Call A. O. Smith Customer Care Centre if you notice continuous blinking of Tank full indicator.

Auto flush indicator

This indicates flushing is in progress. Every time the water purification process is activated the auto flushing mechanism cleans the RO membrane. It enhances the life of RO membrane.

NOTICE

Call A. O. Smith Customer Care Centre if you notice continuous blinking of Auto flush indicator.

Filter change indicator

This indicates that the RO membrane or filters needs to be replaced.

- Filter change indicator starts blinking indicating that the RO membrane or filters life is reaching its end time.
- When RO membrane or filters life reaches its end, Filter change indicator keeps on blinking and the unit stops functioning.

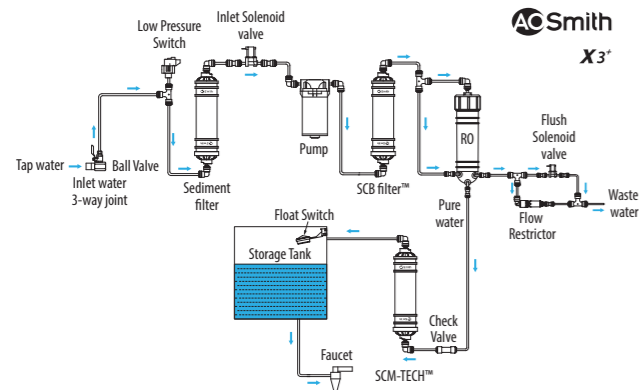
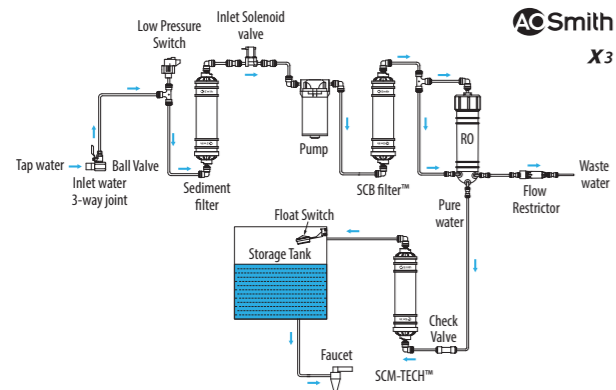
NOTICE

Call A. O. Smith Customer Care Centre to replace the RO membrane or filters.

6

Water flow

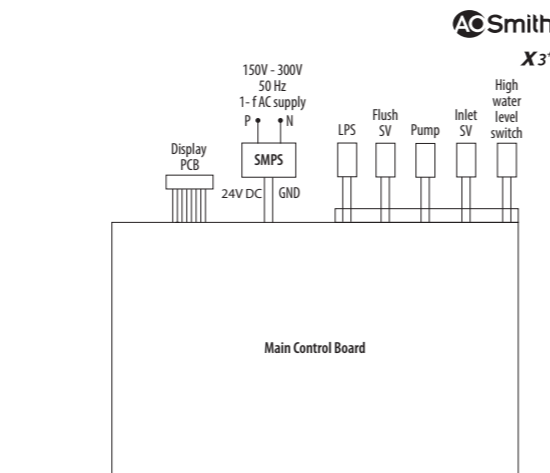
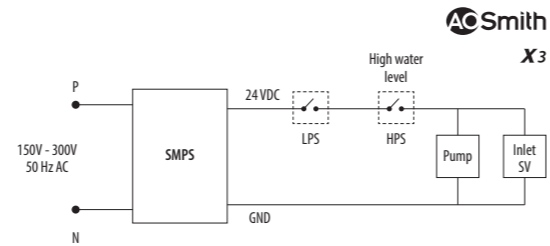
Figure 3



7

Electrical Diagram

Figure 4



8

Safety Precautions

Electrical Safety

Even though these products are designed keeping highest safety standards in mind, there are certain Do's and Don'ts which need to be followed while using these products.

Power plug must be used with a 230V outlet. It is recommended to connect the product to the power supply only with the plug that is provided with the purifier. Do not pull out or touch power plug with wet hands to avoid electrical shock.

Install the product away from direct sunlight.

Figure 5

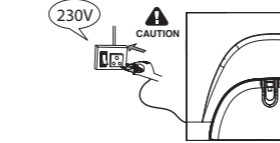
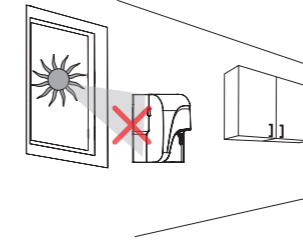


Figure 5



Make sure that the feed water is tested before installation. Do not install the product if the TDS and Hardness are more than that prescribed in the recommended feed water conditions (Refer Page 12).

Product should be installed only by A. O. Smith Company Authorised Service Technician. Do not open the purifier for cleaning the filters or for any part replacements. This must be done only by A. O. Smith Company Authorised Service Technician.

Figure 5

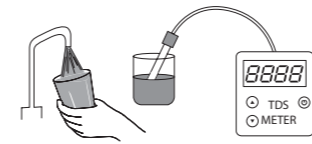


Figure 5



9

How to use

1. Turn ON the water connection through the ball valve.
2. Switch ON the power supply and press the power button of the purifier.

Figure 5

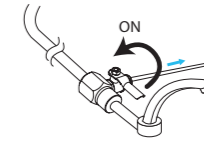
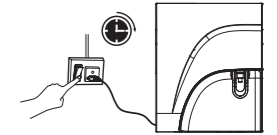


Figure 5



3. To dispense water from the storage tank, push and hold the water faucet lever.
4. To dispense water continuously, lift up the water faucet lever for the continuous water flow. To stop the water flow, pull down the water faucet lever.

Figure 5

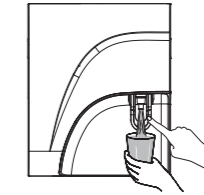
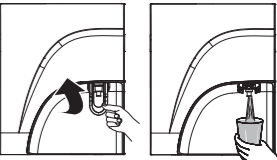
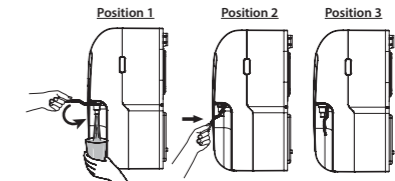


Figure 5



5. To stop the water flow, pull down the water faucet lever to position 2 slowly and then to initial position. This avoids splashing of water.

Figure 5



Notice

- Discard the first cycle of pure water, before you start using it for consumption.
- Make sure to discard the water in the storage tank if you have not used the purifier for more than 2 days.

10

Troubleshooting

Your A. O. Smith X3/X3' RO Water Purifier may not function at its desired capability if used incorrectly. This may not necessarily mean that the product is faulty. For instances like these, please follow the steps given below to troubleshoot the problem without the help from a certified technician. If the problem still persists, please call Customer care centre immediately.

Problems	Possible Cause(s)	Solution
Change in water taste (All models).	Has the purified water been stored in the tank for long time?	Drain the stored water from the storage tank through faucet.
	RO membrane/filters may require replacement.	Call Customer Care Centre for RO membrane/filters replacement.
	Has the raw water quality changed?	Call Customer Care Centre.
	Check if there is no water flow through reject line.	Switch OFF the Water Purifier and call Customer Care Centre.
Decreased flow of purified water (All models).	Check whether the tap/ball valve is closed.	Open the tap/ball valve.
	RO membrane/filters may be clogged or damaged.	Call Customer Care Centre for RO membrane/filters replacement.
Less/No reject water (All models).	Check if the reject Water tube is bent.	Clear the bent in the reject water tube.
	Check if the reject Water tube is blocked.	Switch OFF the Water Purifier and Call Customer Care Centre.
Less/No purified water (All models).	Check whether there is water supply in the tap.	If not, take the help of a plumber to set it right.
	Check whether tap/ball valve is closed.	Open the tap/ball valve.
	Check if either Filter change (X3' model only) is blinking.	Call Customer Care Centre for RO membrane/filters replacement.
	None of the above.	Call Customer Care Centre.

11

Problems	Possible Cause(s)	Solution
Tank full LED blinks continuously (For X3' model). 	Over flow error.	Switch OFF the Water Purifier and call Customer Care Centre.
Power LED blinks continuously (For X3' model). 	Low pressure alarm is triggered indicating that the system input water pressure is not in the required range.	Check feed water supply to the purifier. If problem still persists, switch OFF the Water Purifier and call Customer Care Centre.
Flush LED blinks continuously (For X3' model). 	RTC error.	Switch OFF the Water Purifier and call Customer Care Centre.
Filter change LED blinks and unit is functioning (For X3' model). 	RO membrane or filters life is about to ends.	Call Customer Care Centre for RO membrane or filters replacement.
Filter change LED blinks and unit is not functioning (For X3' model). 	RO membrane or filters life ends.	Switch OFF the Water Purifier and call Customer Care Centre RO membrane or filters replacement.

12

Technical Specifications

Model	A. O. Smith X3/X3'
Product Dimensions (H x D x W)	460 mm x 260 mm x 380 mm
Net Weight	8.5 kgs (approx.)
Gross Weight	10 kgs (approx.)
Flow rate*	Upto 15 litres per hour
Storage tank capacity	5 litres (approx.)
Purification technology	RO (Reverse Osmosis)
6 Stage Purifying Technology	Sediment filter + SCB filter (Sediment filter + Carbon block) + Side Stream RO membrane + SCM-TECH filter (Silver Activated Post Carbon + MIN-TECH)
Membrane type	Thin film composite RO membrane
Material of construction for plastic parts	Food safe, non-toxic, engineering grade plastics
Pump type	Diaphragm pump, 24VDC, 0.26 Amps, Operating Pressure 125 psi (Max.)
Input Voltage	150 – 300 VAC, 50 Hz
Power rating (Max)	48 Watts
Pressure Rating***	5 psi to 30 psi
% Recovery**	Upto 30%
TDS reduction**	≥95% (approx.)
Input water temperature	5°C to 45°C

* Flow rates depends on variable factors such as feed water pressure, feed water characteristics and condition of the membranes and filters.

** Recovery and TDS reduction percentages also depends on variable factors such as life and condition of the membranes and filters, feed water pressure, feed water characteristics etc.

*** If input pressure exceeds 30 psi, a pressure reducing valve needs to be installed at the feed line. If the pressure is lower than 7 psi, a booster pump needs to be installed. Ensure you buy them from A. O. Smith Company authorised service technician.

13

Recommended input Feed water quality for the optimum performance of your product

RECOMMENDED FEED WATER QUALITY	
Parameter	Limits
Total Dissolved Solids (TDS)	Up to 2000 ppm
Total hardness	Up to 500 ppm
Turbidity	Up to 5 NTU
Iron	0.3 ppm (max.)
Feed water pressure	5 psi to 30 psi
Feed water temperature	5°C to 45°C

14